

R-Xm-WK

JJJ | AMERLUX RETROFIT INSTALLATION INSTRUCTIONS



IMPORTANT: Read **ALL** instructions before starting installation.

CAUTION: To reduce risk of shock, **TURN OFF ELECTRICAL SUPPLY** before installing/servicing fixtures.

WARNING: Fixture must be installed in accordance of National Electrical Code (NEC) and/or any local codes. *Failure to do so may result in serious injury and/or damage to the fixture.*

RECOMMENDED TOOLS

**Screw Driver
(Phillips)**



**Wire
Cutter/Stripper**



SAFETY INSTRUCTIONS

- Observe and follow all label information and instructions regarding dry, damp and wet location listings, proper lamp type and wattage, warnings of installation near combustible materials and/or insulation.
- Turn off power at circuit breaker before attempting to install or perform maintenance on the fixtures.
- **WARNING: RISK OF FIRE OR ELECTRIC SHOCK.** Luminaire wiring and electrical parts may be damaged when drilling for installation of LED retrofit kit. Check for enclosed wiring and components. LED retrofit kit installation requires knowledge of luminaires electrical systems. If not qualified, do not attempt installation, and contact a qualified electrician.
- Install this kit only in luminaires that have the construction features and dimensions shown in the drawings and where the input rating of the retrofit kit does not exceed the input rating of the luminaires.
- Only the open holes indicated in the drawings may be made or altered as a result of kit installation. Do not leave any other open holes in an enclosure of wiring or electrical components. Do not make or alter any other open holes in an enclosure of wiring or electrical components during kit installation.
- **WARNING:** To prevent wiring damage or abrasion, do not expose wiring to edges of sheet metal or other sharp objects.
- This retrofit kit is accepted as a component of a luminaire where the suitability of the combination shall be determined by authorities having jurisdiction.

R-Xm-WK

JJJ | AMERLUX RETROFIT INSTALLATION INSTRUCTIONS



ORIGINAL SOCKET REMOVAL INSTRUCTIONS



Figure 1

- Remove fixture's trim, accessory (if applicable) and light and set aside the trim, discarding light (*Fig. 1*)
- Unscrew bracket holding the original socket in place (*Fig. 2*)
- With a wire cutter, cut the leads connecting the original socket to the wiring compartment (*Fig. 3*)
- Remove wiring compartment door through aperture (*Fig. 4*)
- Remove ballast from wiring door (*Fig. 5*)

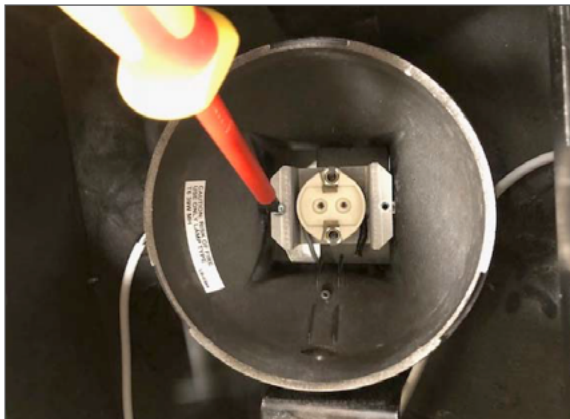


Figure 2



Figure 3



Figure 4



Figure 5

R-Xm-WK

JJJ | AMERLUX RETROFIT INSTALLATION INSTRUCTIONS



GU24 SOCKET + Xm20/XM24 MODULE INSTALLATION INSTRUCTIONS - FIXED DOWNLIGHT



Figure 6



Figure 7



Figure 8



Figure 9

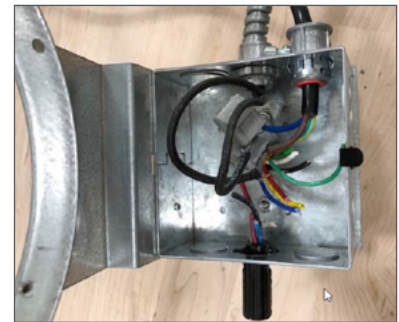


Figure 10

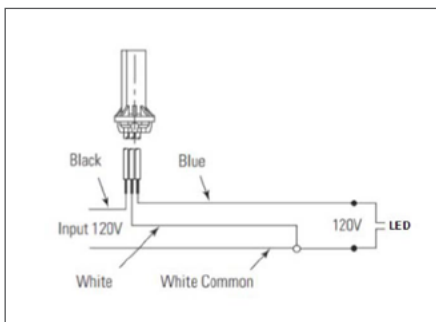


Figure 11



Figure 12

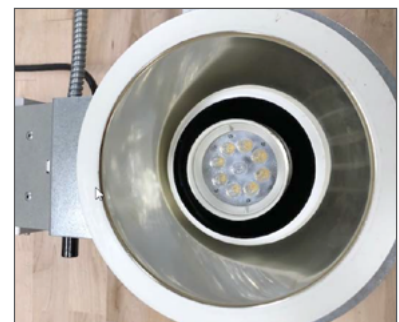


Figure 13

- Using the provided Wago connectors, splice leads from new GU24 socket assembly to cut leads from the original socket (Fig. 6)
- Using the same holes from the original socket, screw in new GU24 socket bracket assembly (Fig. 7)
- Access the wiring compartment by removing the three screws located in the bottom section of the inside of the housing (Fig. 8)
- Access the wiring compartment by pushing the round housing into the plenum and open the compartment as shown (Fig. 9)
- Disconnect the two leads going through the flex conduit and connect directly to line voltage using Wago connectors — since this is AC current, polarity is not an issue (Fig. 10)
- If a thermal protector is needed, use a multimeter to identify the hot or neutral wire accordingly and use the diagram below (Fig. 11)
- Replace the wiring compartment door and screw compartment housing back into place (Fig. 12)
- Align Xm24 pins and GU24 socket slots and twist to lock module into place and replace the trim (Fig. 13)
- **NOTE:** The original lens is NOT to be re-installed

R-Xm-WK

JJJ | AMERLUX RETROFIT INSTALLATION INSTRUCTIONS



GU24 SOCKET + Xm20/XM24 MODULE INSTALLATION INSTRUCTIONS - ADJUSTABLE DOWNLIGHT



Figure 14

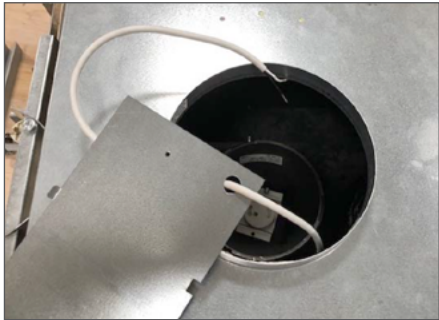


Figure 15

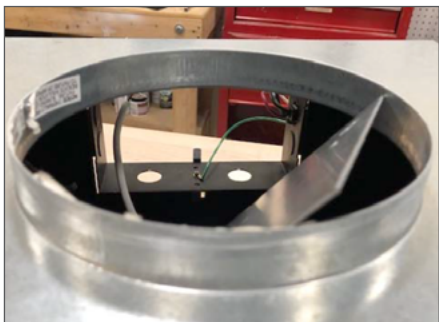


Figure 16



Figure 17



Figure 18



Figure 19

- Using the same holes from the original socket, screw in new GU24 socket bracket assembly (*Fig. 14*)
- Insert new sleeved wiring leads through wiring compartment door holes (*make sure driver has been removed; see Fig. 5*) (*Fig. 15*)
- Using the provided Wago connectors, splice together the line voltage connections making sure this is done inside the wiring compartment (*Fig. 16*)
- Replace the wiring compartment door by aligning tab on the bottom section of the door with the slot in the lower portion of the housing (*Fig. 17*)
- Align Xm module pins and GU24 socket slots and twist to lock module into place (*Fig. 18*)
- Replace the trim (*Fig. 19*)
- **NOTE:** The original lens is NOT to be re-installed